



SUNNY TRIPOWER 125

STP 125-70

1

24x 24x 48x 1x 2x 1x 2x 1x

pre-mounted

2

IP65 indoor / outdoor

90°... >20° 97 kg

+60 °C
-30 °C

max. 4000 m

3

1 2x PH2 1.5 Nm

2 SW16 35 Nm

3 4x

4 97 kg

3

5 4x 4 mm 2 Nm

6 2x PH3 4.5 Nm

4

1 3- max. 200 A

2 3- max. 200 A

3 OFF

4 ON

5 2x TX30

4

Al ✓
Cu ✓

35 to 240 mm² Ø 30 to 60 mm

70 to 240 mm² 18 to 20 mm 120 to 150 mm

11

optional

5 6 7 8 9 10

4

11 Al ✓

12

13 14

15 Heat shrink tubing OT/DT terminal 5x crimp fix

16 17 SW19 20...30 Nm

18 19 TX30

20 Al ≥16 mm² Cu ≥10 mm² PH3 7...9 Nm

4

16 17 SW19 20...30 Nm

18 19 TX30

20 Al ≥16 mm² Cu ≥10 mm² PH3 7...9 Nm

4

AC	STP 125-70
P_{AC} (@ 230 V, 50 Hz)	125 kW
S (@ $\cos \varphi = 1$)	125 kVA
$V_{AC,r}$	400 V
$V_{AC, range}$	320 V to 480 V
I_{AC}	181,1 A
$I_{AC, max}$	181,1 A
f_{AC}	50 Hz / 60 Hz
$\cos \varphi$	0.8 overexcited to 0.8 underexcited

5

1 2 3 4 5 6 7

SUNNY TRIPOWER 125 ROUTER LAN

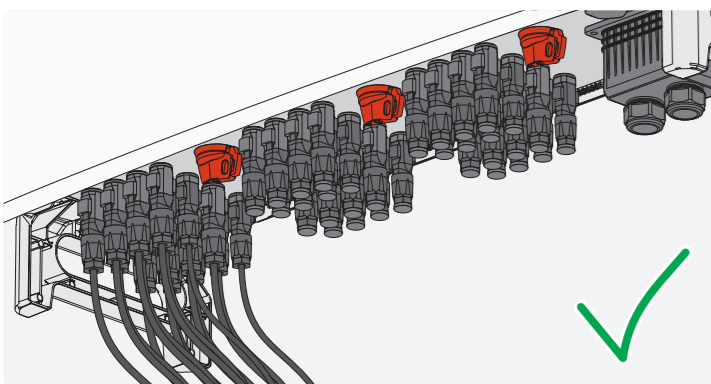
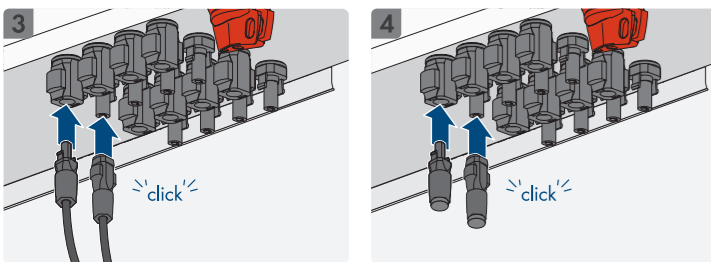
6

MPPT1 MPPT2 MPPT3 MPPT4 MPPT5 MPPT6

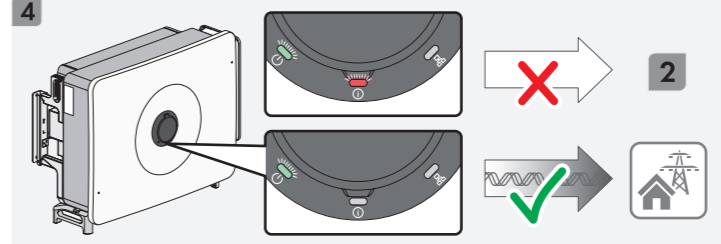
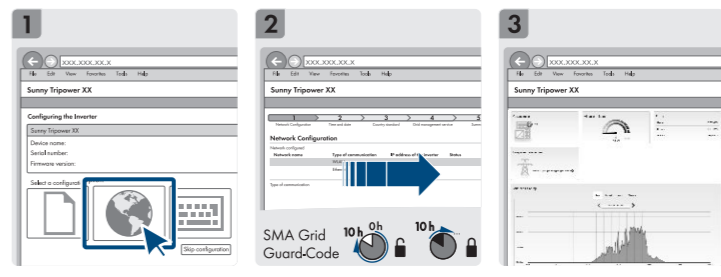
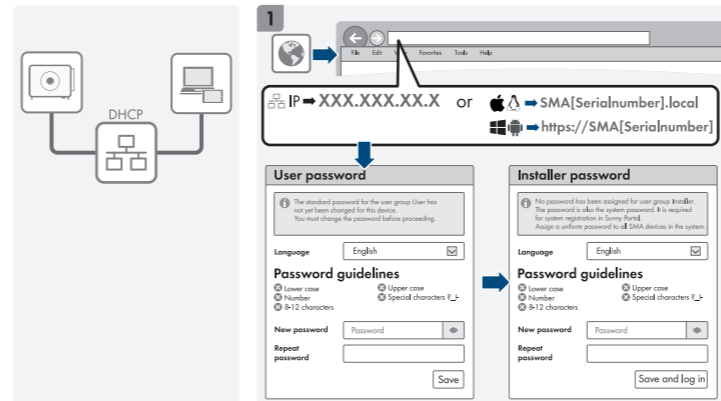
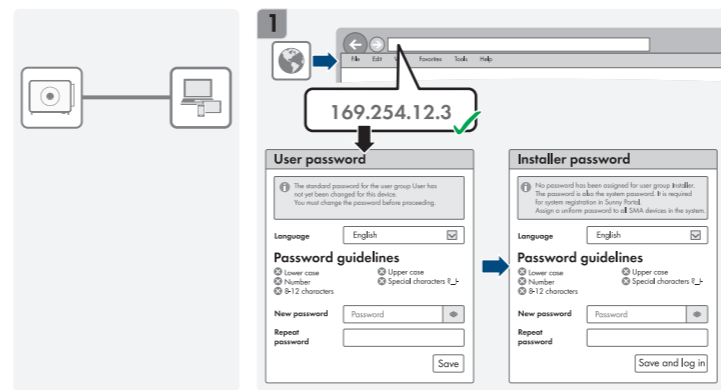
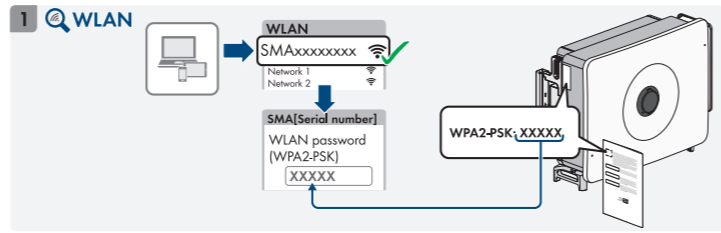
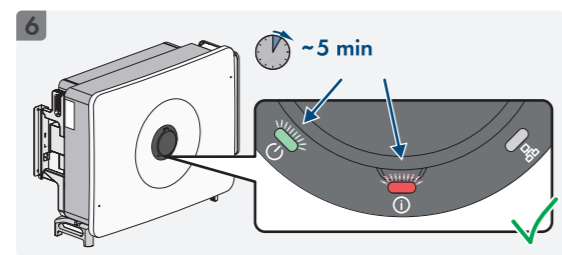
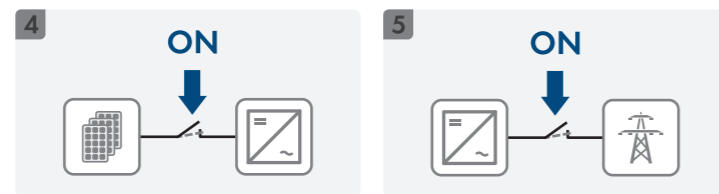
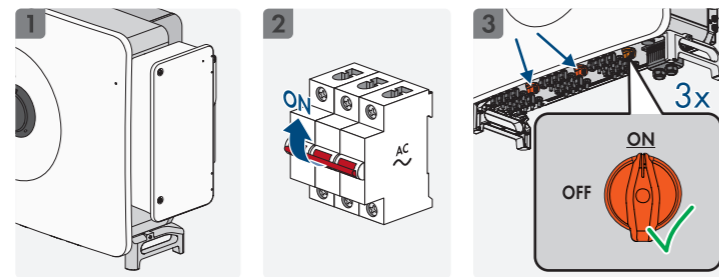
PV1 PV2 PV3 PV4 PV5 PV6 PV7 PV8 PV9 PV10 PV11 PV12

SOLAR DC 2.5 to 6 mm² Ø 5.5 to 8 mm V > 1100 Vdc

1 2



DC	STP 125-70
Max. generator power	187500 W _p STC
V _{DC, max}	1100 V
V _{DC, MPP @35°C}	450 V to 800 V
V _{DC, MPP @40°C}	550 V to 800 V
I _{SC PV max, MPP}	30 A / 40 A



Topology	without transformers
Overvoltage category in accordance with IEC 60664-1	II (DC), III (AC)
Protection class in accordance with IEC 61140	I
All-pole sensitive residual-current monitoring unit	integrated
Maximum permissible value for relative humidity, condensing	100%
Extended humidity range according to IEC 60721-3-4	0% to 100%
Pollution degree inside the enclosure	2
Pollution degree outside the enclosure	3
Demand Response Mode per AS/NZ 4777.2	DRMO
Power control/Demand Response (DRED)	Communication via Modbus



<https://go.sma.de/service>